



 MEMBER OF DEXIS EUROPE

PRODUCT CATALOGUE



FAIT GROUP

3

PRODUCTS

4

CONSTRUCTION AND ASSEMBLY

7

MODULINE

8

CONVEYOR BELTS

10

ASSEMBLIES

12

LINEAR MOTION

15

TECNOLINE

16

HIWIN

18

SHAC

20

ZIMMER GROUP

22

PRECISION SHAFTS AND LINEAR MOTION COMPONENTS

24

ROLLERS

26

TEXROLL

28

ROLLMAX, ROLLFLAT, ROLLTENSE, SPIROX, EXPANDER

30

AIRBLOCK

32

POWER TRANSMISSION

34

FIM ELECTRIC MOTORS

36

MZ FANS

37

NACHI, UNIMEC, TRAMEC, DURI

38

CUSTOM PULLEYS AND GEARS

40



FAIT Group was founded in 1976 as a reseller of industrial technical items for the thriving textile district of Prato.

Over the years, the company has come to preside over the linear motion market, with the production and distribution of hardened shafts, guides, linear modules, ball screws, alveolar profile rollers, aluminium profiles, conveyors and assemblies for machinery frames and safety fences.

FAIT Group business processes are guided by the key principles of lean production and industry 4.0, and by the values of high integration between departments, quality, flexibility, dynamism, enhancement of human resources, dialogue and continuous improvement.

FAIT Group is a point of reference for OEMs in many industrial sectors, constantly offering technical support and continuous coaching as a construction partner.

2018 sees the kick-off of the collaboration with DEXIS which, through the largest brands on the market, offers services and solutions for equipment maintenance. Investments in design, processes and machinery have never stopped.

A collection of various aluminum profiles and structural components, including extruded beams and brackets, arranged in a stack.

01

CONSTRUCTION AND ASSEMBLY

Aluminium profiles, aluminium structure, conveyors and assemblies

A detailed view of linear motion components, including a ball screw assembly, a linear guide, and a ball bearing housing.

02

LINEAR MOTION

Linear modules, guides and ball screws, hardened shafts and Linear Motion components

A variety of rollers, including aluminium rollers, spread rollers, and spiral rollers, shown in different orientations and sizes.

03

ROLLERS

Aluminium rollers, spread rollers, spiral rollers, converting

A collection of power transmission components, including gears, sprockets, and shafts, arranged in a cluster.

04

POWER TRANSMISSION

Products and components for power transmission



01

**CONSTRUCTION
AND ASSEMBLY**

Aluminium profiles, aluminium structure,
conveyors and assemblies

MODULINE

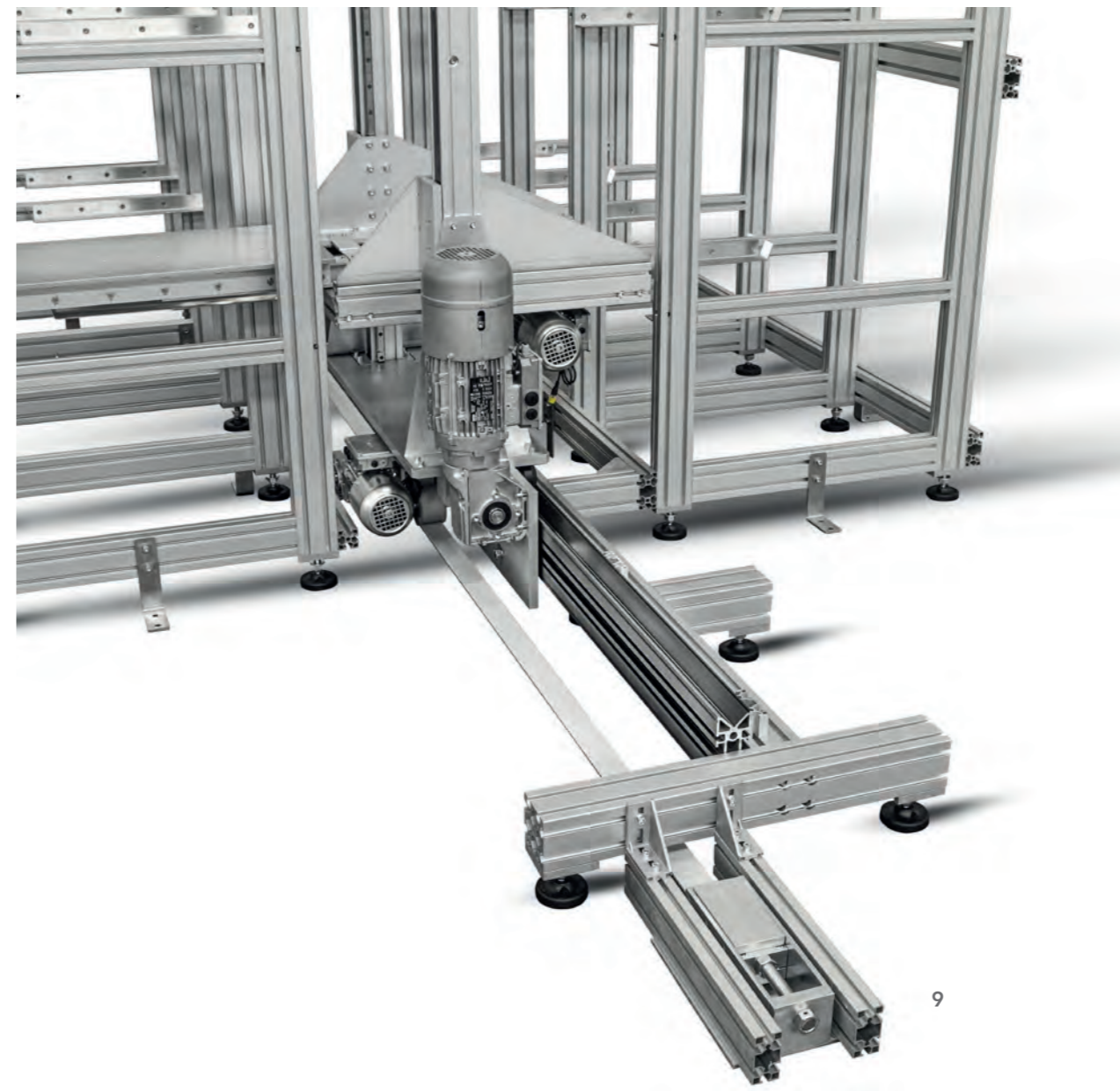


With **Moduline**, FAIT Group offers a complete range of solutions for the construction of **frames**, **safety fences** and **protections for automatic machines**.



Wide range of **profiles** and **assembly** components available.

A dedicated production line with latest generation processes and CNC machining centers, allow to design and build structures and protections for every industrial sector of reference.



CONVEYOR BELTS



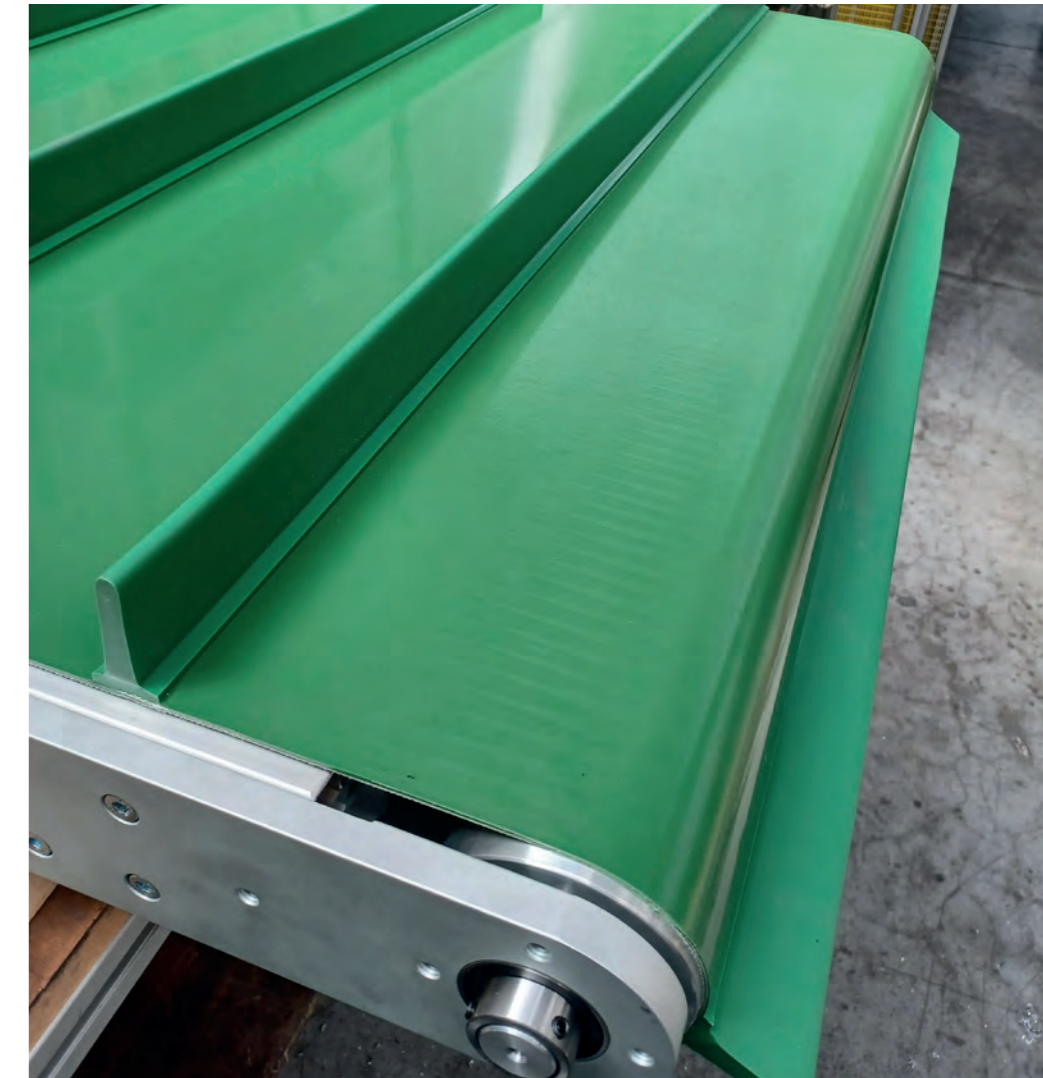
Within the Moduline Conveyors production line, FAIT Group produces and implements handling system such as **belt conveyors**, **parallel belts**, **roller conveyors** and **polyvertebrate chain systems**.



The quality of the components and accessories of the conveyors makes them suitable for the transport of **pal-lets** and **packages** of various sizes, to be used in many product sectors, from **automotive** to **packaging**, from **food** to **pharmaceuticals**.



Each project is followed in every aspect by a team of dedicated technicians and through cutting-edge machines.



ASSEMBLY

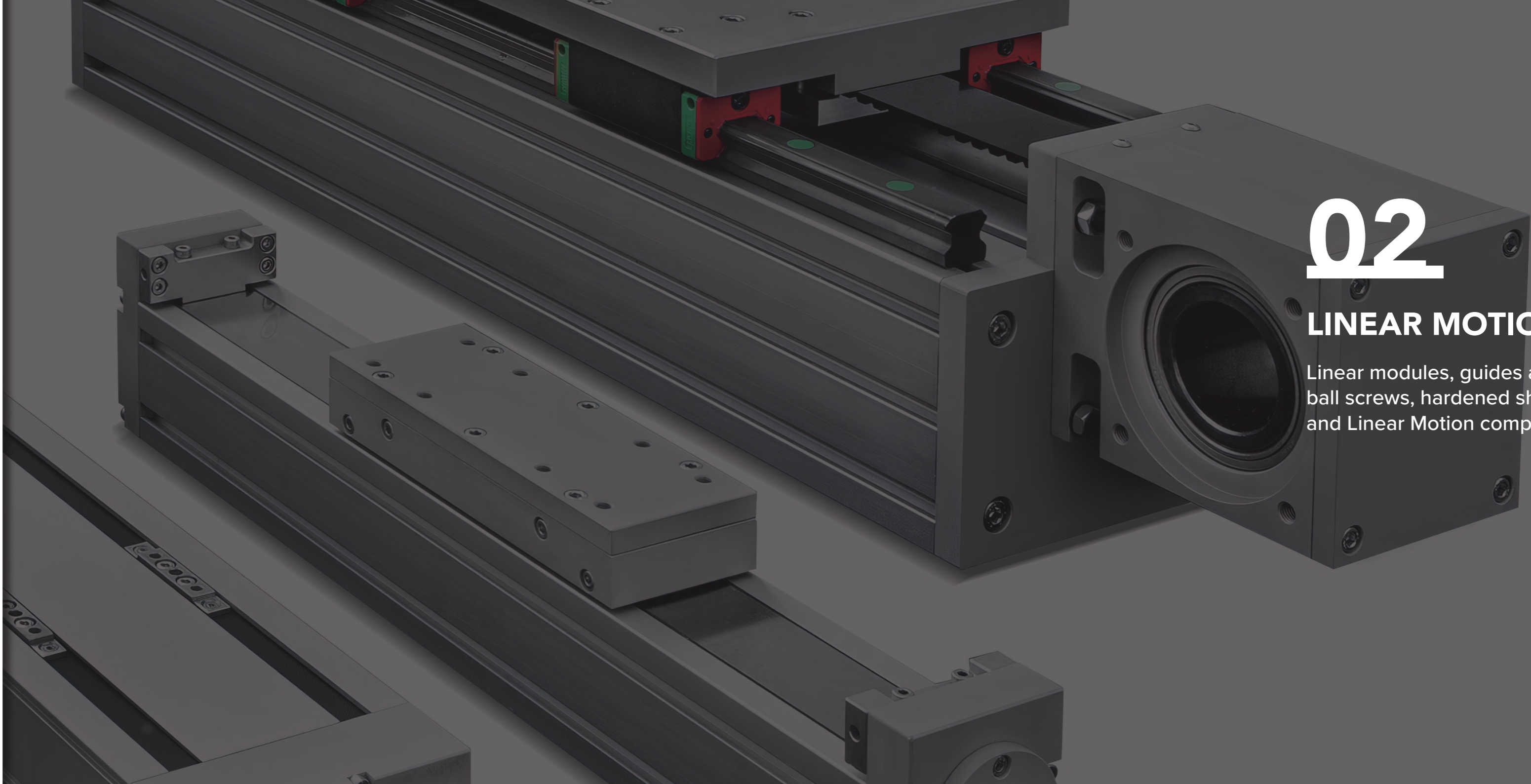


FAIT Group has developed a department dedicated to the **production and development of machinery parts and assemblies** to support its customers. The company's know-how in the linear motion and power transmission sectors has been further strengthened, to transfer knowledge in this service.



The company works constantly at improving constructions and product assemblies, providing its customers with functional and controlled products, as well as systems for managing components and orders.





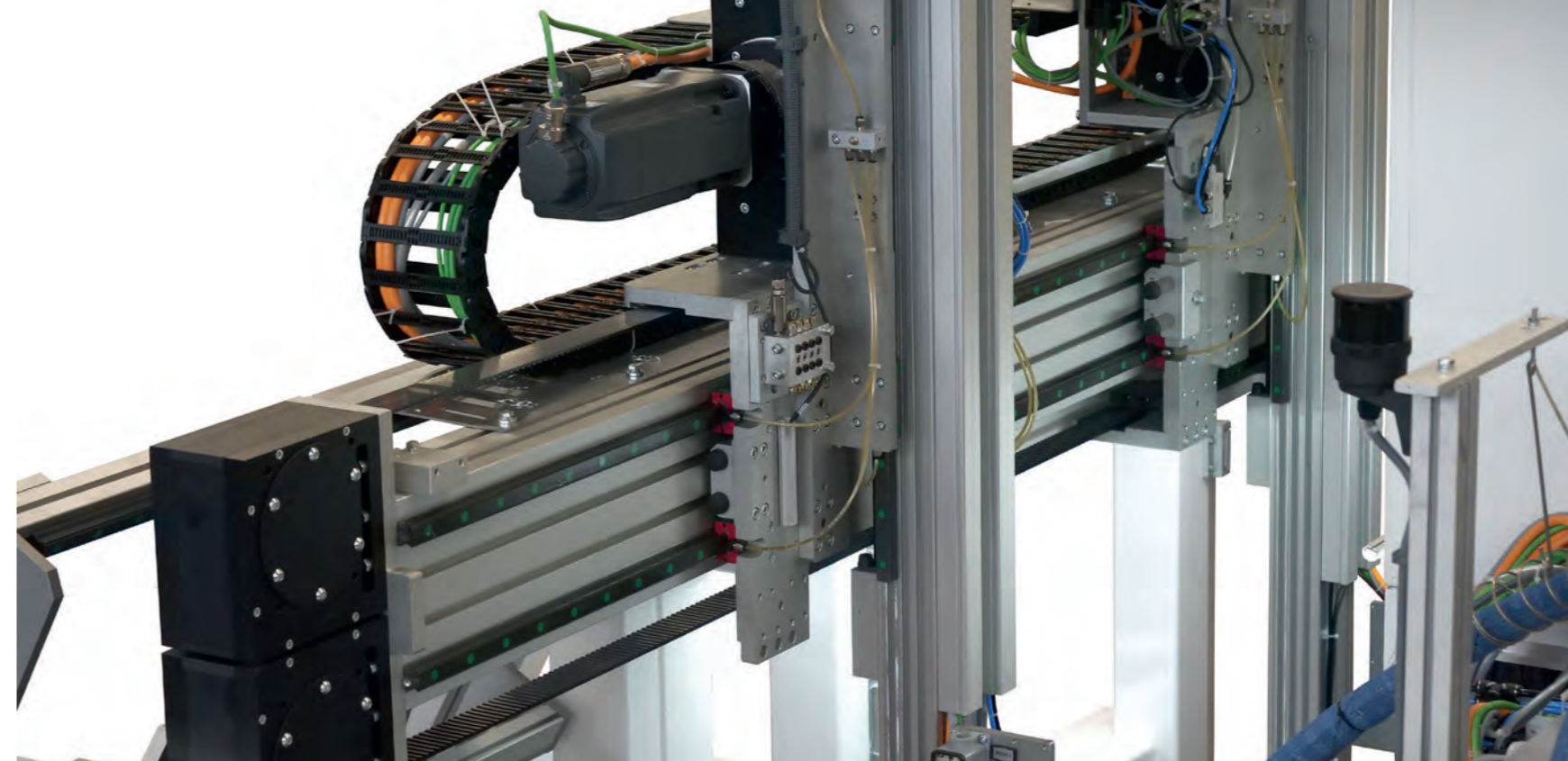
02

LINEAR MOTION

Linear modules, guides and ball screws, hardened shafts and Linear Motion components

TECNOLINE

MOTORIZED LINEAR MODULES



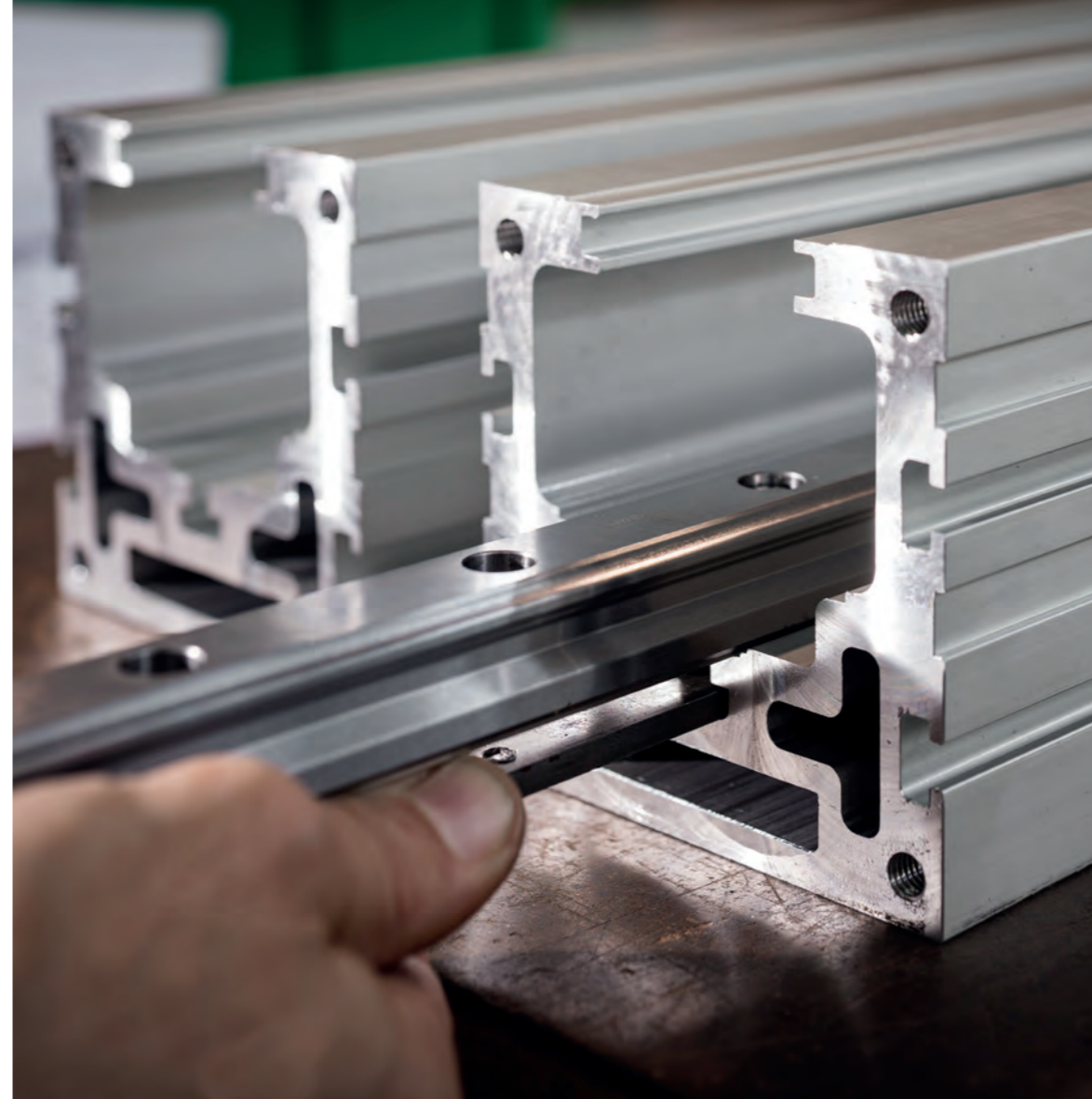
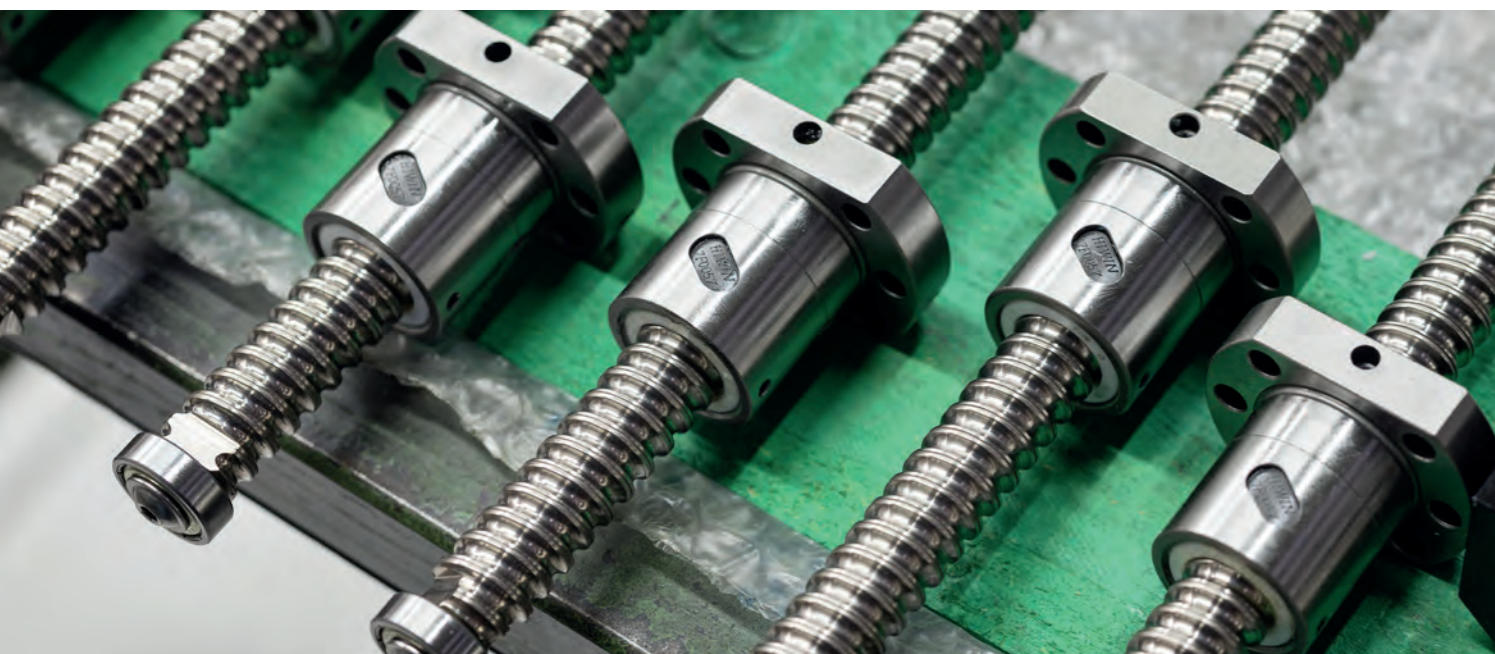
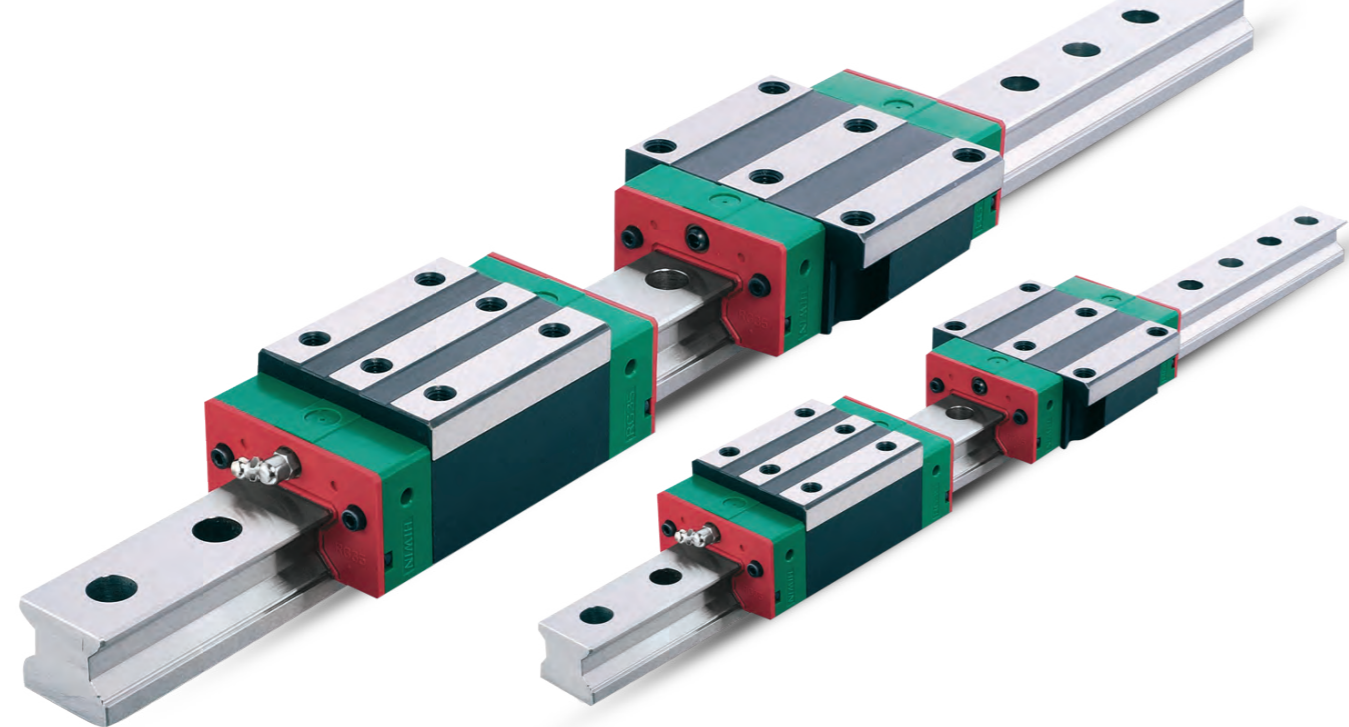
High performance, high quality, reliability, precision and repeatability are the goals pursued by **TecnoLine**, the line that identifies the production of **linear modules, linear axes and linear actuators for automation**.

The **linear systems** are entirely manufactured in-house and include various drive types: belt drive, ball screw, trapezoidal screw and rack and pinion.



HIWIN

FAIT Group distributes in Italy **linear guides and ball screws produced by Hiwin**. The Taiwan-based company produces a full range of **linear motion** and **automation** products. Its strengths are the linear guides with recirculating balls and recirculating rollers, sliding blocks with caged balls, rolled and / or ground recirculating ball screws.



SHAC



Shac is a company that has been producing **linear guides, ball screws and components for linear motion** since 2007.

SHAC®



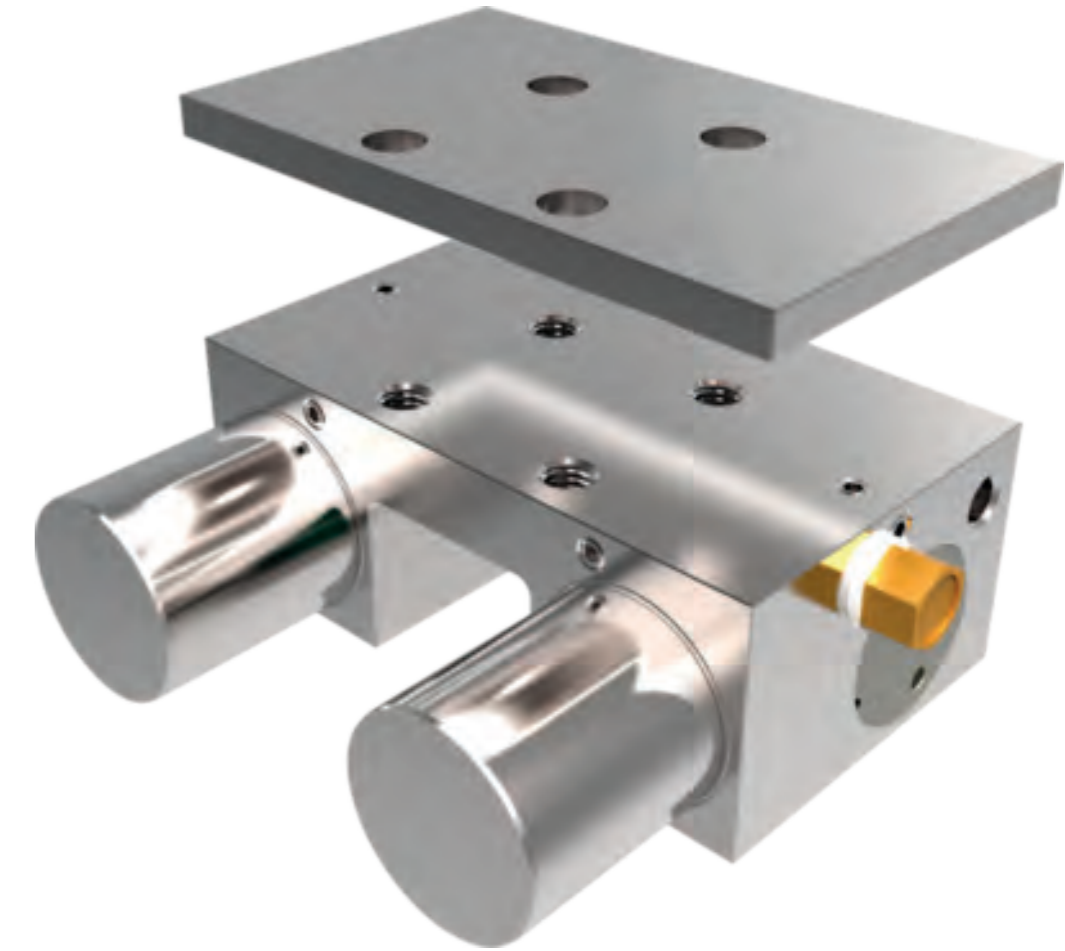
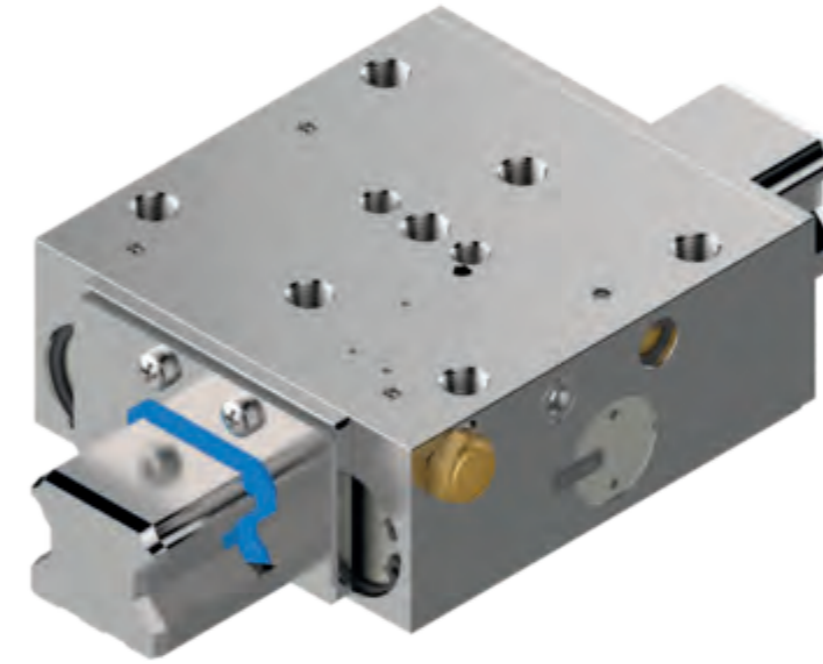
Thanks to a cutting-edge production system and to a continuous expansion of the range offered, it stands as an important partner for FAIT Group and adds to an even broader and more complete offer in the world of linear motion.

ZIMMER GROUP

Zimmer was born in 1980 in Rheinau-Freistett and quickly conquered the world of automation and manipulation technology. Thanks to its ability to develop innovative products, the company stands out in the field of production of highly complex components, offering solutions for important OEM customers. The original garage quickly grew into a high-tech company, and to this day Zimmer is recognized as one of the leading manufacturers in the industry, appreciated throughout the world for its **high-quality, standardized solutions for machine and plant construction.**



Clamping and braking elements ensure that moving components such as Z-axes or workbenches always maintain their position and that machines or systems stop as quickly as possible in an emergency.



Zimmer Clamping and Braking Elements offers more than 4,000 product variations for **linear guides, precision shafts**, and for **various guide systems from all manufacturers**, whether operated manually, pneumatically, electrically or hydraulically.

PRECISION SHAFTS AND LINEAR MOTION COMPONENTS

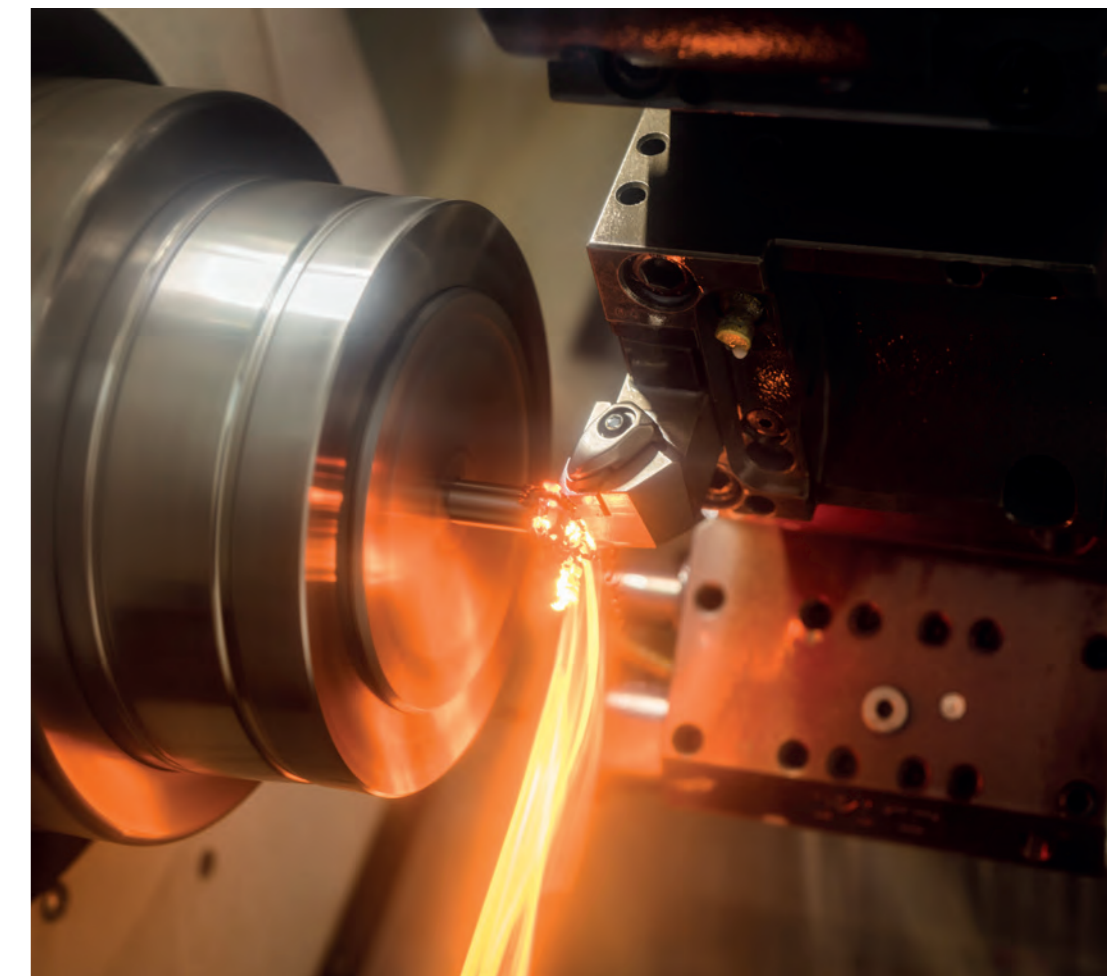
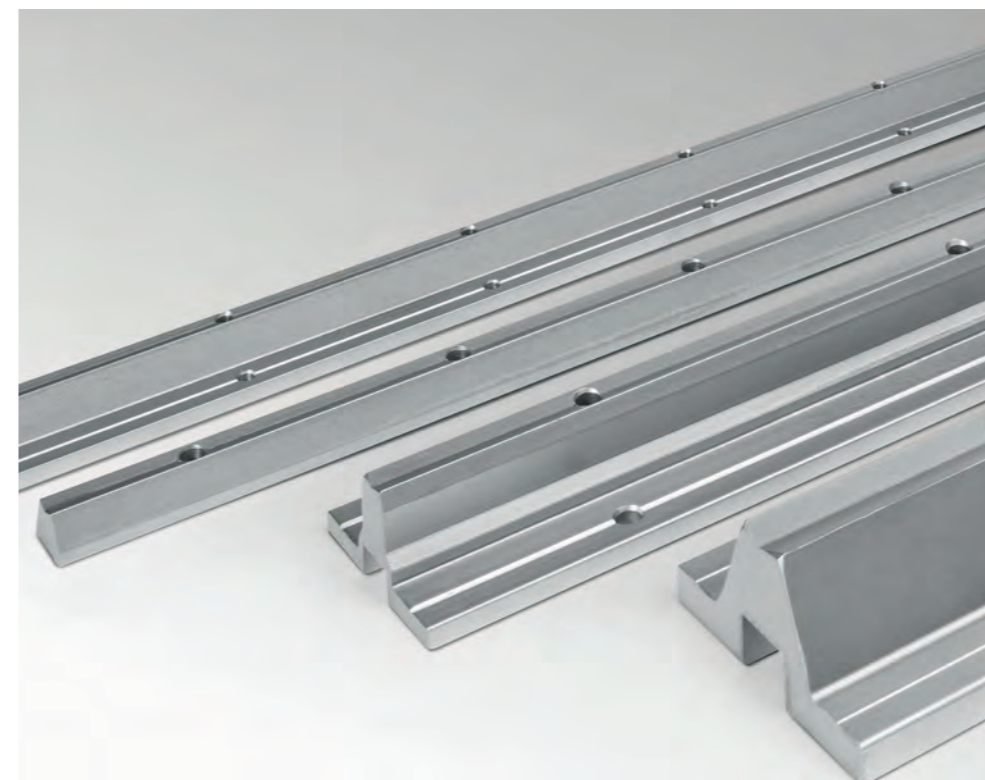
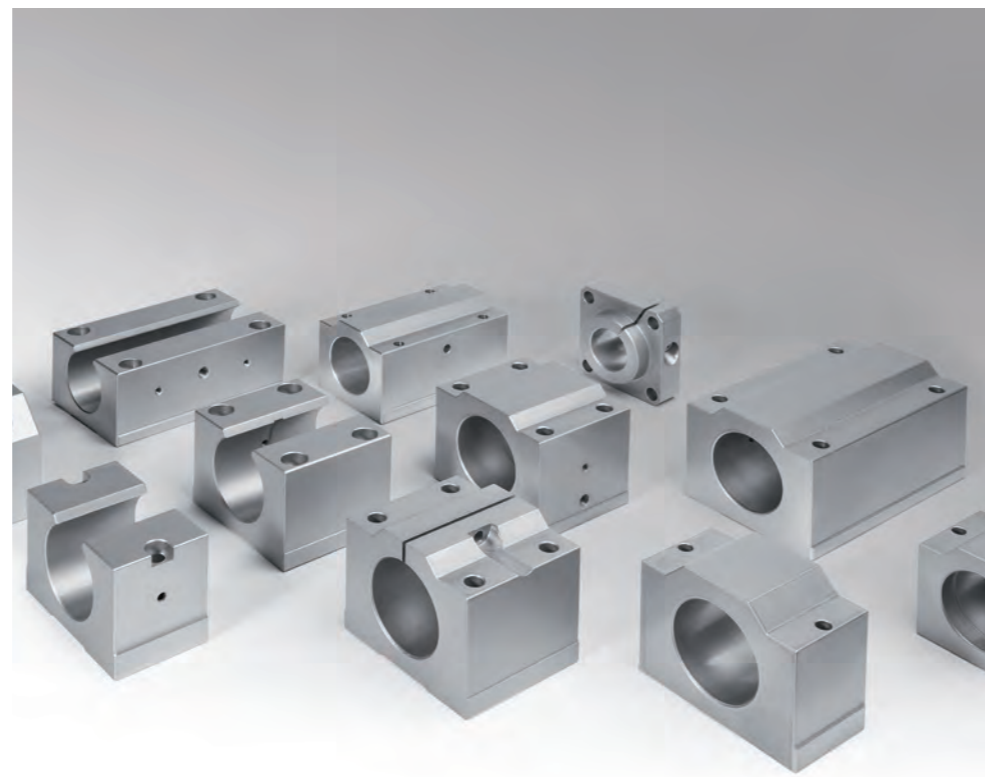
FAIT Group produces **hardened, hardened chrome-plated CF53/CK55 precision shafts** and the entire **hardened, stainless steel X46CR13** and **X90CRMV18** range for linear motion.



Thanks to a wide range of CNC machines and machining centers, it is possible to create complete and finished custom shafts.



FAIT Group owns a complete series of **shaft supports** and **aluminium ends for linear shafts** (FTSN, FTSU, FTSS, FTSWA), as well as a complete line of **bushings** of the LME and KH series, also self-aligning.





03

ROLLERS

Aluminium rollers, spread rollers, spiral rollers, converting

TEXROLL



Texroll is the line of **aluminium rollers** with a specific alveolar section that allows for a low coefficient of inertia and excellent resistance to bending.



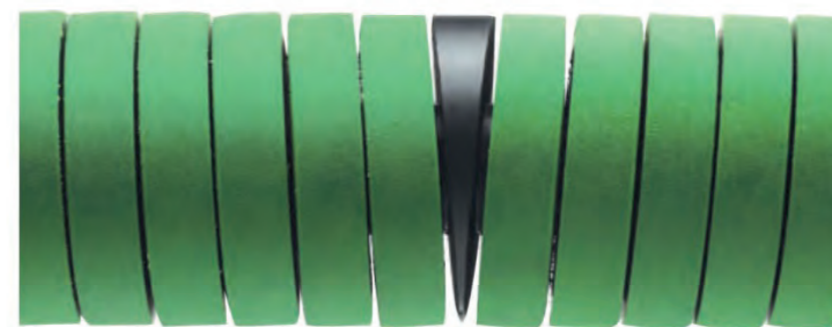
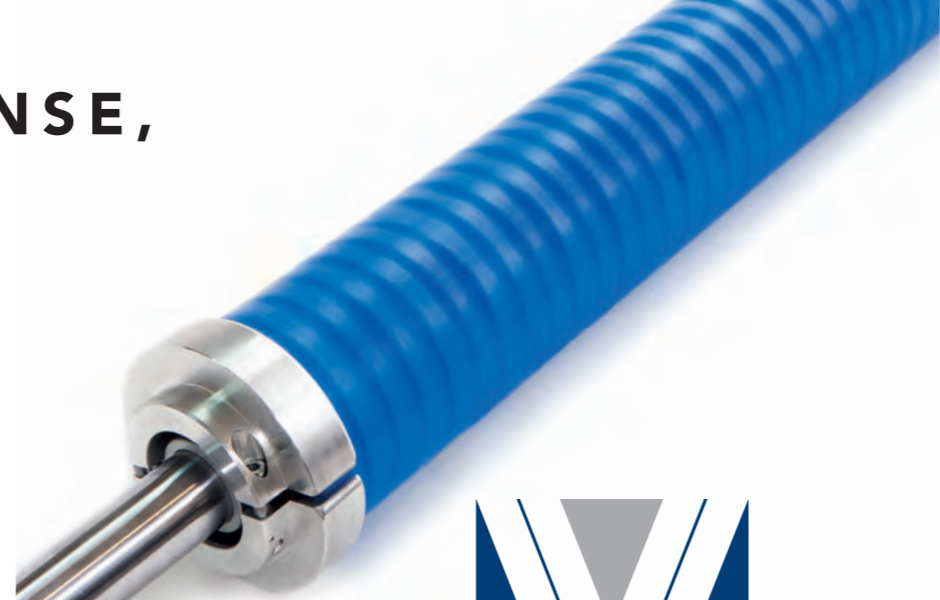
TEXROLL



Rollers can be built according to the customer's design, with pins or heads also in stainless steel version, with high performance and high precision (with turning and grinding).

ROLLMAX, ROLLFLAT, ROLLTENSE, SPIROX, EXPANDER

Rollmax, Rollflat, Rolltense and Expander are spreading rollers entirely conceived and produced in FAIT Group. Each system has been specially designed in order to offer particular solutions for each type of application, for speed, environment and type of material.



AIRBLOCK

Airblock is the line of **expanding shafts** with a central body in aluminium or steel, produced by both strips and keys execution.



The strips positioned inside the strips lots can be in **rubber**, **PU** or **aluminium**, based on application needs.



32

The **keys** positioned inside the special housings can be in **rubber**, or in **aluminium**, based on application needs.

Expanding heads are a valid, simple and very flexible system of core locking.

At the same time, it is possible to quickly perform diameter changes of the cores, by using already existing expandable shafts as base.



The **pins**, made entirely according to the customer's design, can be in **steel**, **stainless steel** or **aluminium**. It is also possible to apply **different types of treatment** on each terminal, such as galvanizing and burnishing or heat treatments such as induction hardening.



33



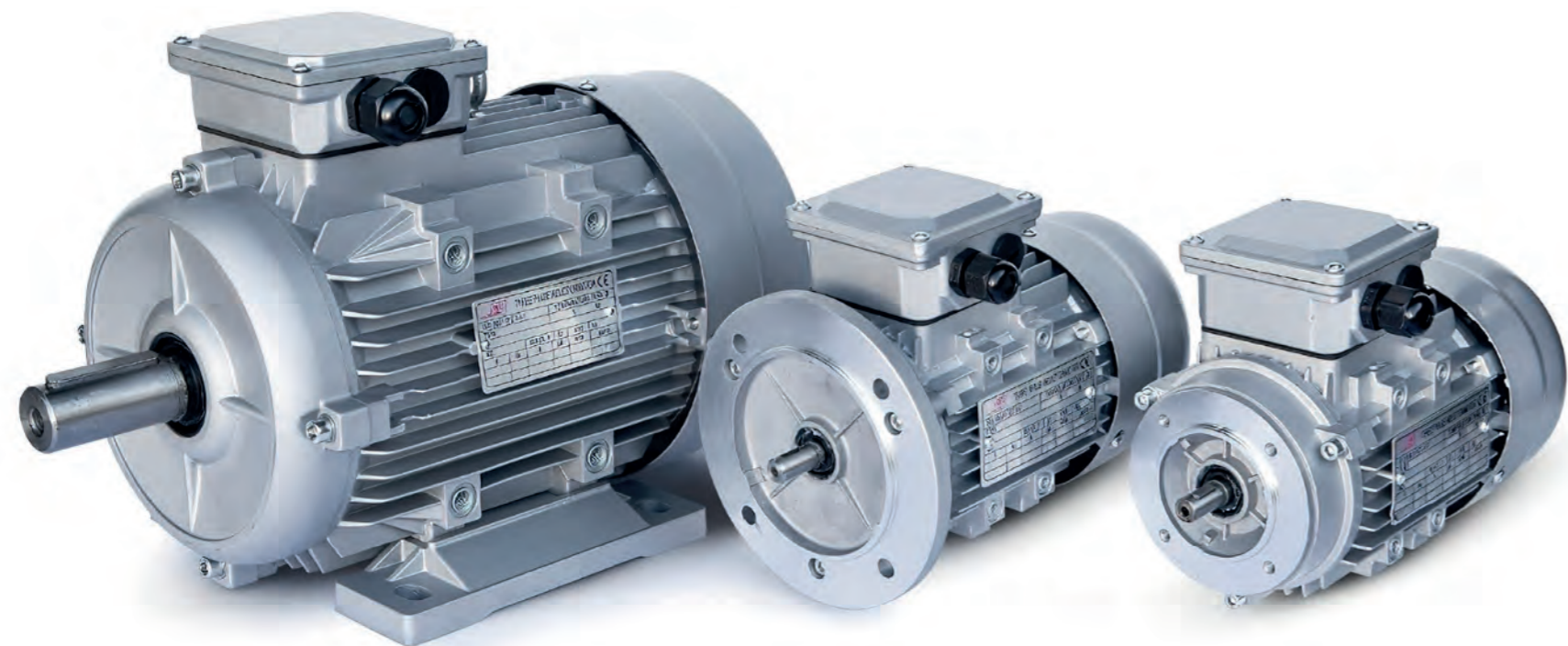
04

POWER TRANSMISSION

Products and components for
power transmission



FIM brand motors are manufactured according to the international standards of unification. Aluminium body from gr. 56 to 160, cast iron casing from gr. 180 to 355. All motors have IE3 or IE2 efficiency for powers greater than 0.75KW (in continuous service S1). They are IP55 with insulation class F in B3, B5, B14, B35 and B34 execution, 2/4/6 poles. They are suitable for inverter power supply and it is also possible to modify, on request, the motor according to the working needs such as elongated shafts, windings for special voltages and frequencies.



MZ FANS



Since 1974, **Mz Aspiratori** has been producing and marketing **fans** that find application in all industrial sectors with robustness, construction rigidity, quality and innovation.

The company invests in research and development, both through the purchase of new machinery designed to improve the product, while reducing also the costs, both by studying, building and testing new fans and using test data to implement the features of those already on the market.

The flagship of Mz Aspiratori production are the special machines for particular applications.



NACHI, UNIMEC, TRAMEC, DURİ

NACHI

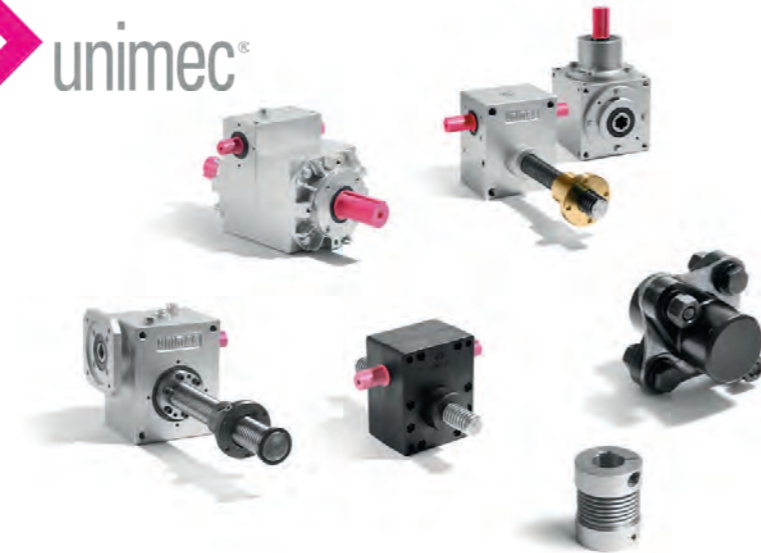


FAIT Group distributes in Italy **Nachi-Fujikoshi**, one of the leading Japanese companies in the production of **bearings** that stand out for their low noise level and maximum operating safety.

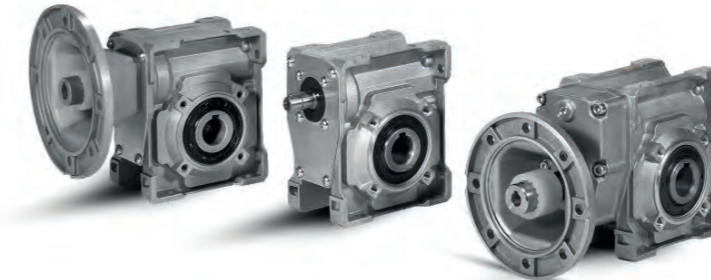
As a leading manufacturer of rolling bearings, Nachi-Fujikoshi produces all sizes for the automotive, electrical engineering and industrial machinery construction sectors. Plus, the company is the only Japanese manufacturer to make 100% of their products in Japan.

FAIT Group distributes the **Unimec** line of **screw jacks and bevel gearboxes**. All products are designed and manufactured with innovative technologies, in order to provide a reliable and highly performing product.

unimec



TRAMEC



FAIT Group distributes the **Tramec** line of **worm gears and planetary gearboxes**. The products stand out for their high build quality and wide use in various fields of application.

DURI is one of the largest manufacturers in the world of **transmission coupling, shrink discs and precision rings**. Products both in aluminium that in stainless steel, the wide range allows you to cover every application need.

DURI



CUSTOM PULLEYS AND GEARS

FAIT Group has its own production line dedicated to **toothed pulleys, sprockets and custom gears** up to a diameter of 550 mm. Modular toothed gears up to module 12 are available.

The toothed pulleys can be made with inch or metric toothing; surface treatments are also possible to improve resistance and wear.

Modern CNC machinery allows you to work different materials such as steel, aluminium, stainless steel and plastic materials with quality, customization, precision of execution, accurate controls and fast delivery.





 MEMBER OF DEXIS EUROPE

Headquarter

FAIT Group SpA
Via Scarpettini, 367-369
59013 Oste Montemurlo (PO) Italy
Phone +39 0574 68121
Fax +39 0574 681262
info@faitgroup.it

Treviso Branch

FAIT Group SpA
Via Aquileia, 2/A
31048 San Biagio di Callalta (TV) Italy
Phone +39 0422 444555
Fax +39 0422 629371
info@faitgroup.it

Milano Branch

FAIT Group SpA
Via Talamoni, 57
20861 Brugherio (MB) Italy
Phone +39 02 26708477
Fax +39 02 26708887
infomilano@faitgroup.it

Germany

FAIT DE GmbH
Gerd Schäfer
Phone +49 (0) 7151-33011
Fax +49 (0) 7151-33063
Mobile: +49 (0) 151-25307794
g.schaefer@faitgroup.it